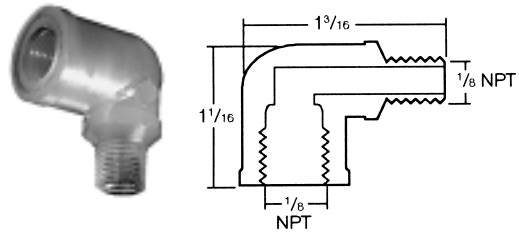
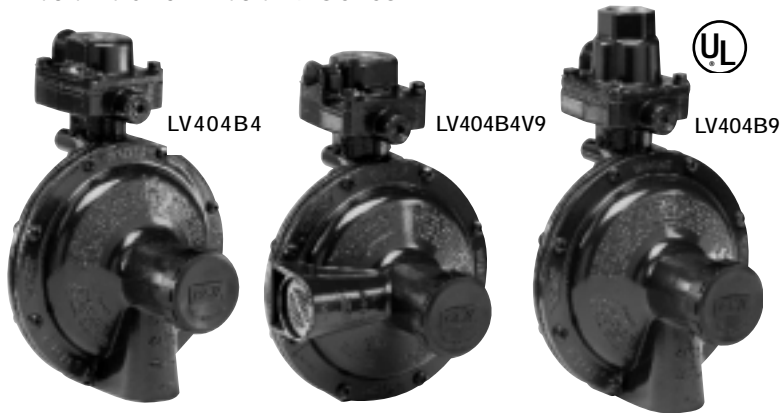


# Compact Twin Stage Regulators

## LV404B4 and LV404B9 Series



404PE Vent Pipe-away for first stage vent.

### Application

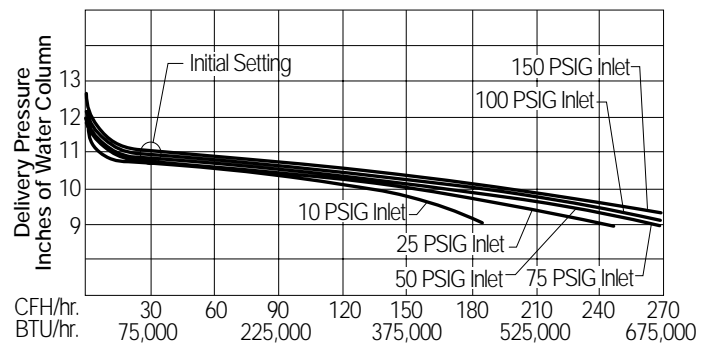
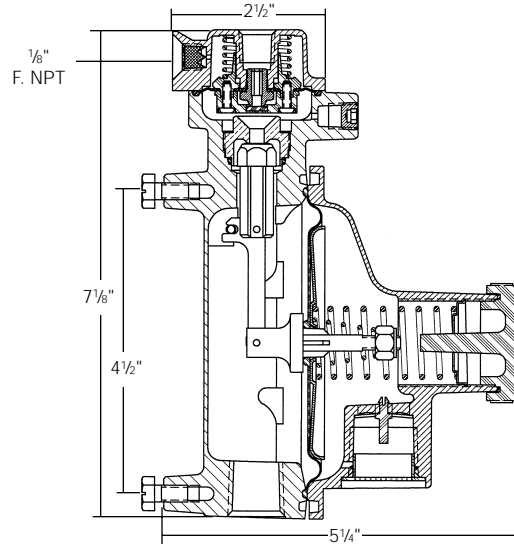
This compact two-stage regulator is designed to reduce container pressure down to 11" w.c. delivery pressure. It is ideal for "on-site" cylinder applications, mobile homes and average domestic service including small ASME and 100 to 420 pound DOT cylinders.

### Features

- Incorporates integral relief valves.
- With 15 PSIG inlet pressure, regulator is designed to not pass more than 2 PSIG with the seat disc removed.
- Large vent helps prevent blockage and has 3/4" F. NPT for vent piping.
- Compact size allows for easy installation — especially under container hoods and within collars.
- Relief vent on the first stage is consistently in the down position.
- Built in pressure taps on both first and second stage regulators have plugged 1/8" F.NPT outlets. Plugs can be removed with a 3/16" hex allen wrench.
- Select brown finish.

### Materials

Body (First Stage) .....	Brass
Body (Second Stage) .....	Die Cast Zinc
Bonnets .....	Die Cast Zinc
Diaphragms .....	Integrated Fabric and Synthetic Rubber
Springs .....	Steel
Valve Seat Discs .....	Resilient Rubber



### Ordering Information

Part Number	Inlet Connection	Outlet Connection	Orifice Size	Factory Delivery Pressure	Adjustment Range 2 <sup>nd</sup> Stage	Bonnet Vent Position 1 <sup>st</sup> Stage	Bonnet Vent Position 2 <sup>nd</sup> Stage	Capacity BTU/hr. Propane*	Accessories					
									1 <sup>st</sup> Stage Vent Pipe-Away					
LV404B4	1/4" F. NPT	1/2" F. NPT	.219	11" w.c. at 100 PSIG Inlet	9" - 13" w.c.	Down	Over Outlet	525,000	404PE					
LV404B4V9		3/4" F. NPT				9 o'clock	9 o'clock							
LV404B46						Down	Over Outlet							
LV404B46V9		9 o'clock				9 o'clock								
LV404B9	F. POL	1/2" F. NPT				.219	11" w.c. at 100 PSIG Inlet			9" - 13" w.c.	Down	Over Outlet	525,000	404PE
LV404B9V9		3/4" F. NPT									9 o'clock	9 o'clock		
LV404B96											Down	Over Outlet		
LV404B96V9		9 o'clock									9 o'clock			

\* Maximum flow based on 25 PSIG inlet pressure and 9" w.c. delivery pressure.